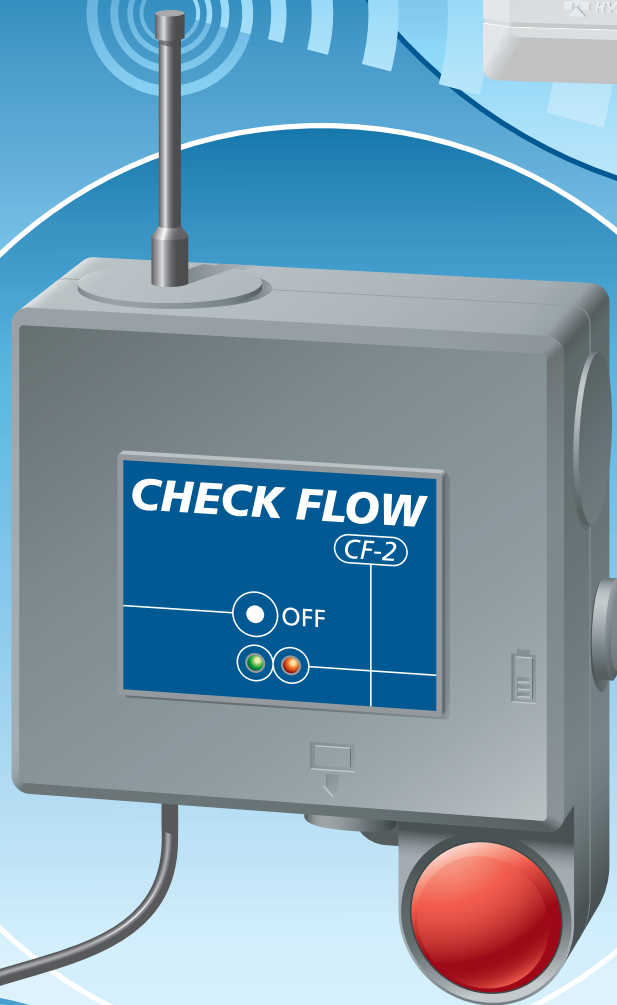


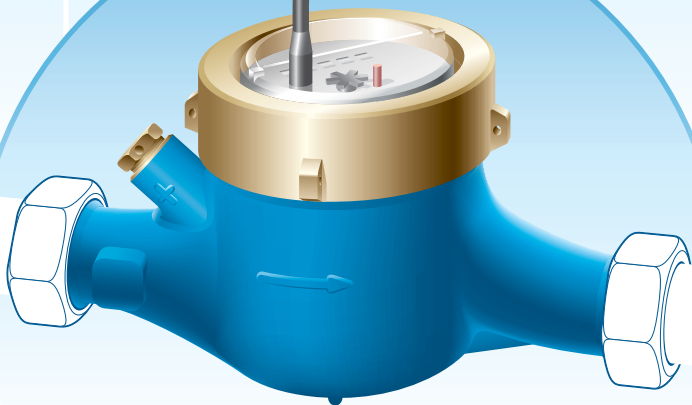
Radio water consumption control system

CHECK FLOW

- Consumption reduction
- Leak detection
- Flood control
- Alarm



*Compact
Autonomous
Easy to install*



Schools
Public buildings
Industrial buildings
Professional premises
Residential buildings
Marinas



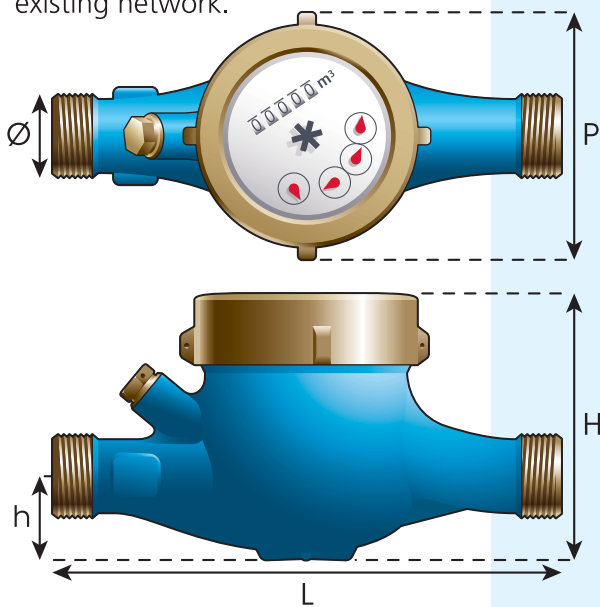
A product by

HYDRELIS
WATER CONTROL

CHECK FLOW *New technologies for water control*

APPLICATIONS

CHECK FLOW provides firms, individuals and communities with safe water consumption monitoring. It controls the water consumption to help you reduce your bills. It is easily installed onto any existing network.



	Ø25	Ø30	Ø40
L	220	220	300
H	120	120	130
h	40	40	60
P	100	100	136

STANDARD IMPLEMENTATION

- to be installed at the entry of the building water supply (Commercial and Public buildings, Private housing, Industries).
- At the water supply entry of the sanitary block (Commercial and Public buildings, Leisure facilities).
- At the entry of a zone (Industries).
- At the entry of isolated water supply units (Public buildings, Green areas, Industries, Leisure facilities).

OPERATION

CHECK FLOW provides real-time measurement and analysis of the water flow, and detects abnormal consumptions. The radio reporting device (500m range when installed outside) gives instant status of the water supply network. It detects leaks and other anomalies and then triggers an alarm: the radio reporting device sounds a beep and lights up a signal LED. The screen shows the type of anomaly detected, as well as the leak rate. Simply press the button on the collection and analysis device to clear the alarm. Clearing the alarm will reset the system.

IMPLEMENTATION

CHECK FLOW package includes 3 units to be installed separately:

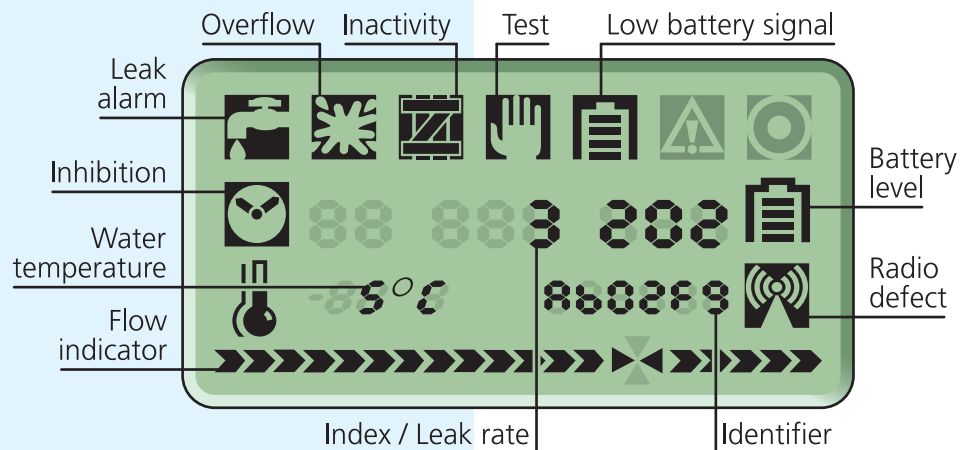
- The detection device
- The data collection and analysis device
- The reporting device

The detection and the collection and analysis devices must be placed at the entry of the building water supply.

The reporting device must be installed at a distance, in a place you can easily access to check the water consumption and network status, in a control room for example.

Installation requires no wiring.

REPORTING MODULE



OPERATING CONDITIONS

	Ø25	Ø30	Ø40
Temperature	30°	30°	30°
Qn (m ³ /h)	3,5	5	10
Sensitivity (l/h)	20	20	40

OPTIONS

- Long-range radio device with mains battery (available as from September 2007).
- PC-based data collection and warehousing (available as from September 2007).

HYDRELIS

Web: www.clip-flow.com
eMail: contact@hydrelis.com



A product by
HYDRELIS
WATER CONTROL

CHECKFLOW helps you effectively reduce your water bills