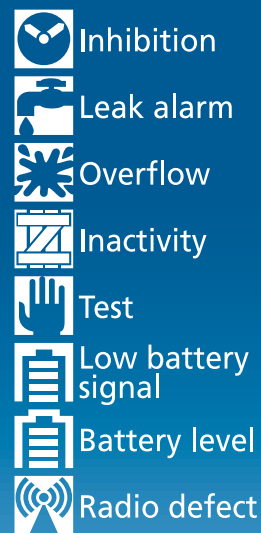


WIRELESS MONITORING KIT

For the remote control
of CLIP FLOW security valves



Without wiring
400m version
4.000m version

- Instantaneous consumption
- Index of consumption
- Alarms on leaks
- Anomalies of consumption

www.hydreliis.com

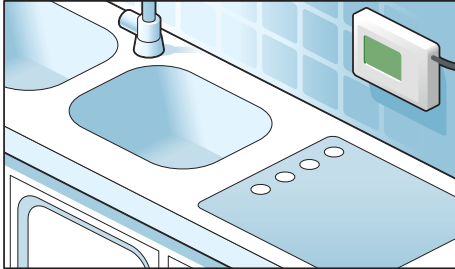


A product from
HYDRELIS
WATER CONTROL

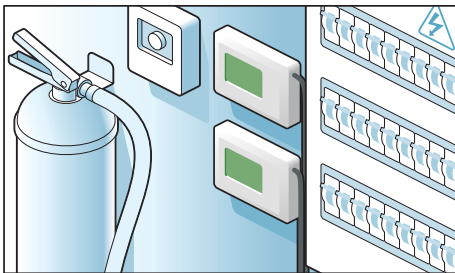
WIRELESS MONITORING KIT

INSTALLATION

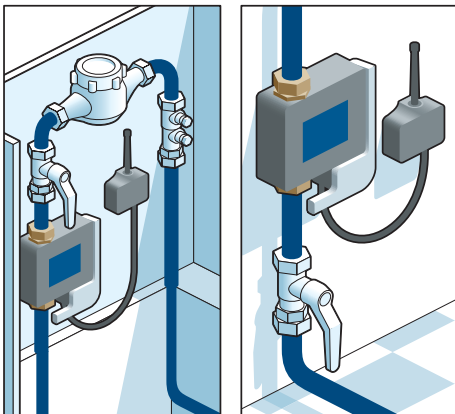
For housing the monitoring unit is usually installed inside the house, in the entry, the kitchen or in a technical premise so that the user has easy access to it.



For collective buildings, the monitoring unit is located in control or technical rooms in order to be easily accessible.



The radio transmitter is connected to the Clip Flow on the RJ45 connector and located next to it.



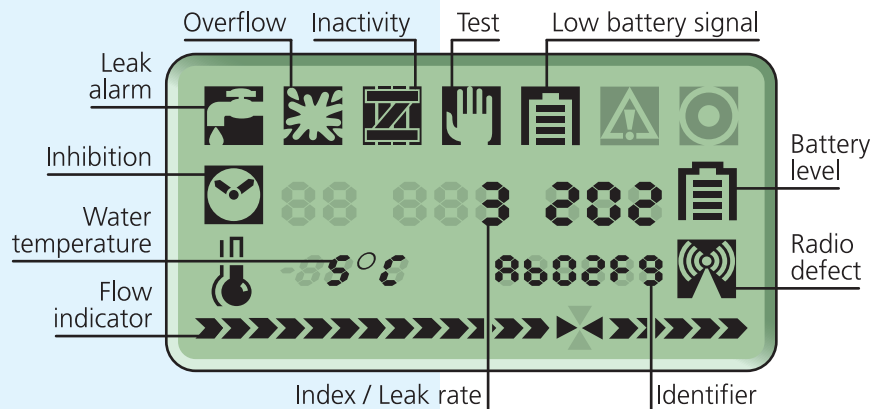
OPERATION

The wireless monitoring kit is made up of two elements:

- A radio transmitter connected to the Clip Flow that transmits both live data on the instant water flow and anomalies detected by the Clip Flow.
- A wireless monitoring unit which receives the remote data and displays it directly on the screen.

Thanks to the wireless monitoring kit, the user knows permanently the instantaneous water flow, the consumption index and even the temperature of the water.

MONITORING UNIT



In the event of an anomaly:

- Audible and optical alarms.
- Indication of the type of anomaly on the screen.
- Indication of the valve position.

Each anomaly is pictured with an icon. When the alarm sounds, it is possible to stop it manually.

TECHNICAL DESCRIPTION

RADIO TRANSMITTER:

- Direct connection on the RJ45 connector of the Clip Flow.
- 400 meters radio coverage with battery (KRR04).
- 400 meters radio coverage with 5VDC external power supply (KRR40).

MONITORING UNIT:

- Integrated wireless radio.
- Direct reading on LCD screen.
- Buzzer and visual alarms.
- 5VDC power supply.
- Possibility of synchronization with a water meter.

RADIO TRANSMISSION:

- 400 meters radio coverage in open field (4 000 meters option available).
- Radio frequency: 868 MHz.
- Secure transmission with coding.
- No interference in the event of use of several systems on the same site.
- USB Wireless Receiver for connection to a PC option available.

www.hydreliis.com



A product from
HYDRELIS
WATER CONTROL

CLIP FLOW helps you effectively reduce your water bills